



# ***CAM TOOLS INDUSTRIES PVT. LTD.***

**PRODUCT DESIGN ■ MOULD MAKING ■ SUPPLY CHAIN**

**WORKS :** E 13, Chakan Industrial Area, PHASE-II, Opp. New Holland, Village Shinde, Taluka-Khed, Pune-410501.

**REGD.OFFICE :** M-3, Mehra Industrial Estate, Unit No.-2, Opp. Sakinaka Telephone Exchange, A-K Rd, Sakinaka, Andheri (East), MUMBAI-400072, INDIA.

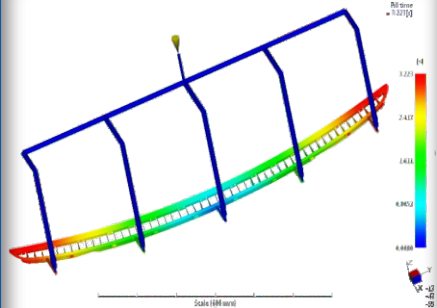
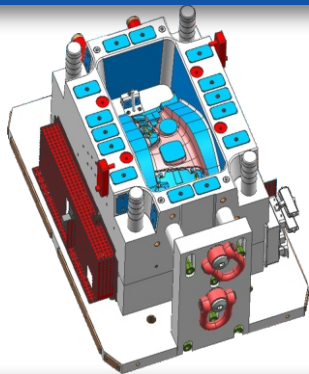
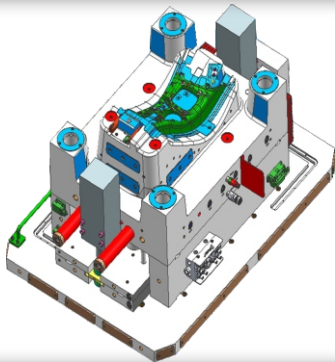
**OFFICE :** +91 (22) 28511647 / +91 (22) 28521358 ■ **CIN NO :** U29248MH2013PTC247127 ■ **GST NO :** 27AAFCC3739A1ZZ

**E-mail :** [info@ctipl.in](mailto:info@ctipl.in) ■ **Website :** [www.ctipl.in](http://www.ctipl.in)



# ***CAM* TOOLS INDUSTRIES PVT. LTD.**

**PRODUCT DESIGN ■ MOULD MAKING ■ SUPPLY CHAIN**

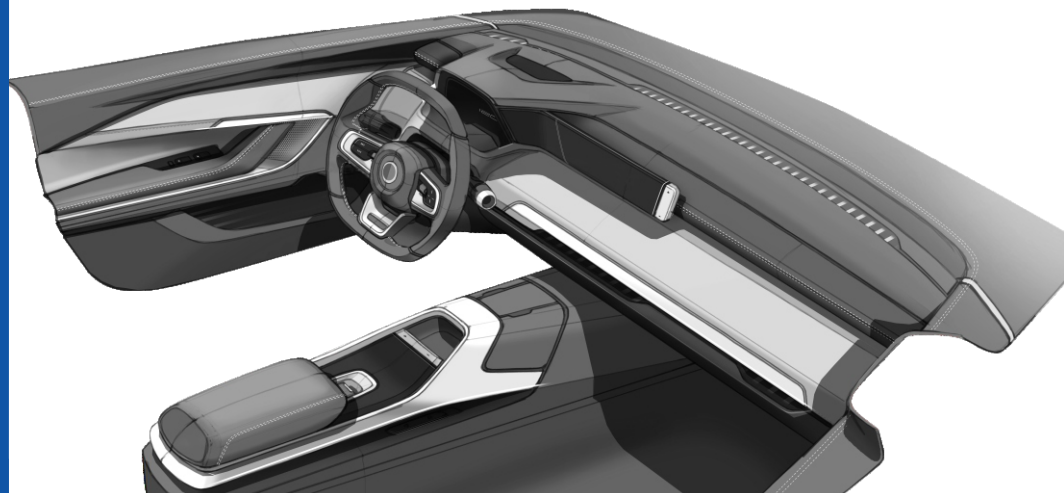


**AUTOMOTIVE**

**TOYS**

**WHITE GOODS**

**MEDICAL**



***CAM* TOOLS**

*The Digital Tool Room*

[www.ctipl.in](http://www.ctipl.in)



# About us

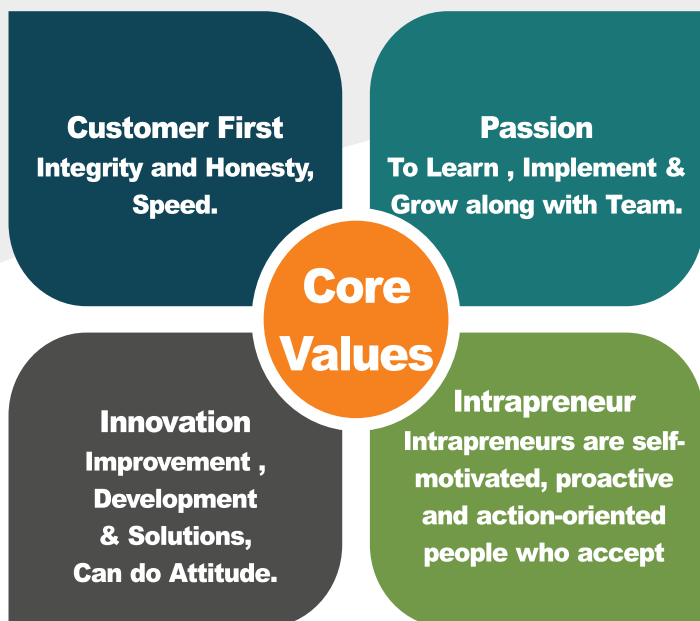
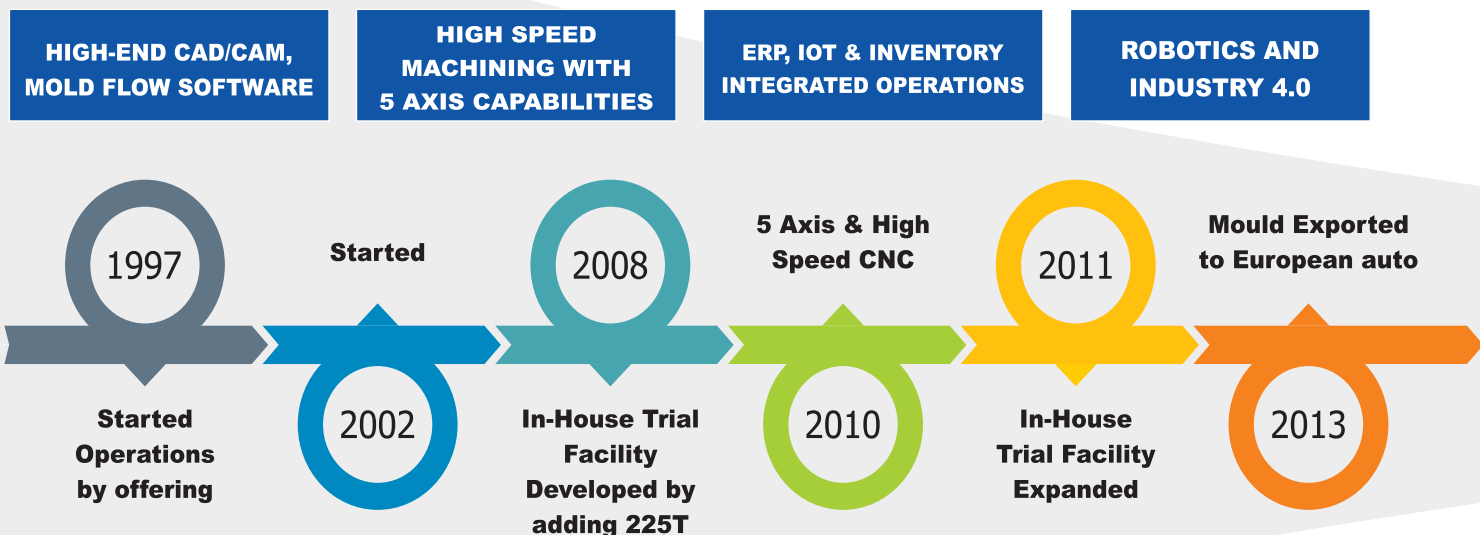
CAM TOOLS is offering solutions for Product Design, Complex Tooling challenges and Supply Chain for many OEMs, Tier 1 customers worldwide. We are developing moulds and supplying plastics parts and sub-assemblies to Automotive, Engineering, Medical and Toys industries.

We are ISO 9001:2015, IATF 16949 Certified Company along with VDA Certification for our new Injection Moulding Plant.

We take pride in our team of experts who are well versed in every aspect of the Product Design, tooling and Supply Chain. We are a highly motivated group of people who work hard to bring you the best quality service at right price you expect. From Engineering to new builds, modifications, troubleshooting of tooling issues, and engineering concerns. Our team members are highly motivated and skilled to bring you the optimum quality service you deserve. With 25 + years of expertise in the tool and die industry, our dynamic team are here as your Reliable Partner for Precision Moulds & Injection Moulded Parts.

We understand that effective Project Management is essential to conduct efficient business, our Project Managers have years of practical experience in Mould Making and strong mould design backgrounds. They are available to provide technical support and assist in solving most difficult tooling challenges. From tool launch to tool try-out, our Project Managers provide a reliable contact to ensure

## TECHNOLOGIES



## Vision

By the end of 2025, Our Vision is to be Partnering with Automotive OEM and Tier 1 suppliers by choice for Plastics Components, Sub assemblies & Value addition processes,

**Our Niche :** Automotive Tooling , Injection Moulding, Assemblies & Value addition

## Mission

Our Mission is to be a Total solution provider company for plastic components & assemblies with cutting edge Technology,



# Expansion Plan 2022 – 2025

## For Injection Moulding Shop & Tool Room at Pune

### INJECTION MOULDING PLANT



- Moulding Machines up to 1300 T capacity.

### MOULD MANUFACTURING



- Increase Capacity from 850 T to 1300 T.
- Double Column CNC Machine 2.5

### RECRUITMENTS



- For Product Designers.
- For Tool Room Team.

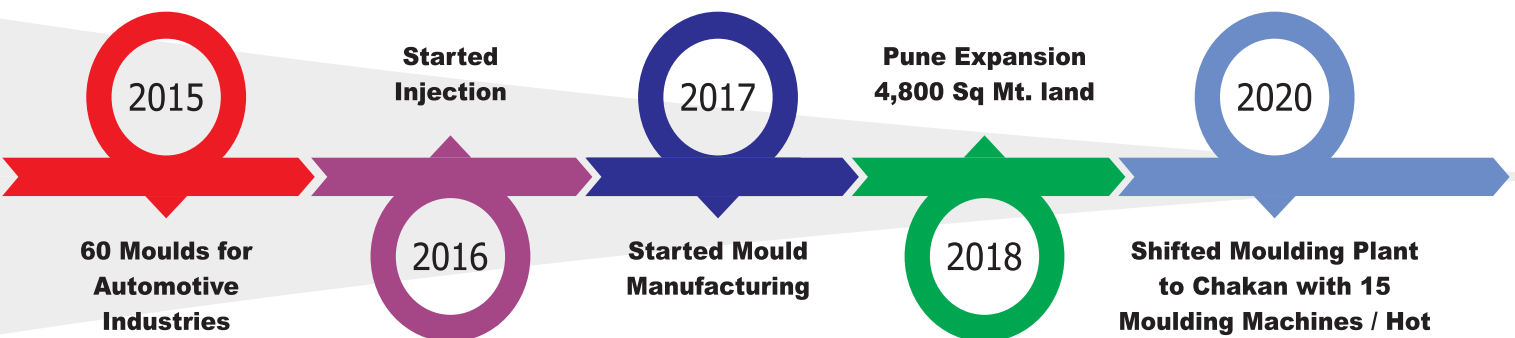
### INDUSTRIAL LAND -



- Adding additional Land Bank



**We are committed for continuous development of our Mould manufacturing and Moulding facilities.**



## OPERATING PRINCIPLE

### TOTAL SOLUTION PROVIDER

With streamlined processes in place, we transform creative ideas into products and concepts and project plans into unique solutions – all delivered and installed on time and to specification.

### LATEST TECHNOLOGIES

To make use of latest manufacturing technologies in our process like High end CAD/CAM, Mold Flow software, ERP, IOT and Inventory enabled operations, Robotics,



## COMPANY PROFILE ▼



### Multiple Locations

Tool Room at Mumbai and Pune,  
Moulding Shop at Pune.



### Integrated capabilities

Mold Flow, Mould Design, Mould Manufacturing  
Mould-trials, Mouldings and Part-assemblies.



### Full-Service Supplier

Precision Moulds & Mouldings for  
Automotive OEM and Tier 1 suppliers.



### Professional Support

Design and Manufacturing of Precision  
Moulds at "Best cost" and in "Short lead-time".



### ISO 9001:2015 Certified facility



### IATF / VDA approved plant



## PRODUCTION CAPABILITIES ▶



### ■ MUMBAI TOOL ROOM

- Manufacturing Capacity 60-80 Moulds Per Year
- Mould Mfg. Capacity range from 50 T to 650 T
- 7500 Sq. Feet Facility
- Crane up to 7.5 Tones

### ■ PUNE TOOL ROOM

- Manufacturing Capacity 60-70 Moulds Per Year
- Mould Mfg. Capacity range from 50 T to 13000 T
- 8000 Sq. Feet Facility

### ■ PUNE INJECTION MOULDING UNIT

- 15 Moulding Machines from 50 T to 775 T
- Hot Stamping / Pad Printing capabilities / US Welding
- 54000 sq feet – Chakan MIDC Plot
- Presently running 240 + Moulds





## WHY US ? ▼



**Professionally Managed  
Family owned business**



**Passionate Mould Maker & Advancing  
towards Injection Mouldings**



**All Facilities under one roof**



**Dedicated Project Management  
For on time delivery with strong Techno  
commercial communication Skills**



**At Par Quality with imported Moulds**

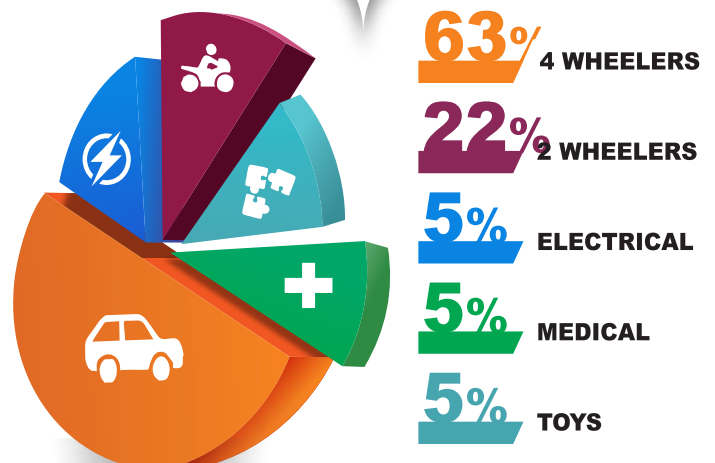


**Quick Response Time**



## INDUSTRIES WE SERVE ▼

**87%** OF MOULDS WE MADE  
IN LAST 3 YEARS  
WERE FROM  
**AUTOMOTIVE  
SEGMENT**





# Complete Solutions for New Product Development

## PRODUCT DESIGN



Employing the latest CAD systems, our experienced in-house design team provides us with the capability to meet all your product design requirements.

In Mold flow we simulate the injection moulding filling process, ensures we get the design right first time. We are aided by design software including Siemens NX, PowerShape, Fusion 360 and support recognized file-sharing methods.

From product design, Mold flow full feasibility review, the use of rapid prototyping

## MOULD MANUFACTURING

Our mould manufacturing unit can manufacture various complex

8 + MOULD MAKERS WITH  
15+ YEARS OF EXPERIENCE

STATE-OF-THE-ART  
MANUFACTURING FACILITY

HIGH SPEED CNC MACHINING  
ADVANCE PRECISION MACHINING TECHNIQUES.

### DFM

In broadest terms, Design for Manufacturability (DFM) - also known as Design for Manufacturing - is the process of consciously and proactively designing products to optimize all facets of manufacturing, including injection moulding. DFM aligns engineering and production in the initial design phase so potential problems can be identified and resolved before they result in costly rework.

Our experienced mould designers

- Analysis of product
- Detail check list
- Manufacturing Capability
- Quicker response time

### MOLD FLOW

Mold Flow software helps reduce manufacturing defects through plastic injection molding simulation. Access tools for injection mold design, plastic part design, and mold processing.

With our Certified Gold Partner we

- Runner balancing
- Molud cooling Analysis & optimization
- Gate location Optimization
- Sequence optimization
- Fiber orientation Analysis
- Warpage simulation
- Insert & Over moulding simulation

### MOULD DESIGN

We have expert mould designers with automotive industry, having 20+ years of experience. We

- 12+ Mould Designers
- Quicker response time
- Cost Effective design
- 3D Motion simulation
- Ongoing Refinement of Standards

## SUPPLY CHAIN



We are proud of the strength of relationships we have developed over many years with our excellent customers and supplier base.

Our moulding capabilities range from 80-775 tonnes with over 15 machines encompassing both servo hydraulic and all-electric injection moulding machines.

Custom  
Manufacturing

Some of  
Special Process

Hot  
Stamping

Painting

PAD Printing

US Welding

Sub-assemblies

# CAPABILITIES

## DOMESTIC PROGRAM MANAGEMENT

Our team consist of highly skilled personnel dedicated to unparalleled Customer service. Leveraging our robust and comprehensive business systems, our team provides 24/7 program support with availability of information, schedules, and service with transparency throughout the process. Each Customer has a dedicated Project Manager to support all advanced engineering, feasibility, and estimating needs prior to program kickoff. On program award, our Program Manager becomes the single point contact for our Customer, responsible for all commercial, technical and timing aspects of the program. Our program management

## GLOBAL PROGRAM MANAGEMENT

Our Global Program Managers provide international integration of tooling support, both for before and after the tool delivery to our customer. We integrate technical reviews and progress reports as part of our ongoing customer communications. We manage different Time-Zone to suit customers requirement.

Our Global Program Management Team is well verse with various international Standards. We are flexible in adopting costumer standards and can import necessary standard accessories as per customer standards and requirement.

First class customer communication, clear schedules, professional service, measures of performance, project reviews and lessons learned. These are all vital elements of our high quality programme management processes.

When it comes to New Product Development (NPD), delivery, quality and costs are the three

## PROJECT MANAGEMENT

We provide with a complete detail project management data to our clients on a weekly basis. This creates transparency between us and our clients. Also, we give the whole project timeline to show the different stages of the project.

You can count on us to help bring your project to market. We will create a clear project management plan and ensure that you are kept informed about your project at every stage of the process.

You will benefit from expert guidance and support in every aspect and we will do so collaboratively

Weekly Update

Pictures of mould at different stages

Continuous follow up to ensure 100% satisfaction

24/7 Availability

## INFRASTRUCTURE

Mould Designers for OEMs

Highly-Skilled and Advanced

Mold flow

10 CNC Machines + Excellent

8 EDM Machines.

Hi-Speed, State-of-the-Art

Excellent Vendor

Mould manufacturing

Pressing capacity of 50T to 850T.

3 Facilities ranging from 7500 Sq. Feet

File Transfer &

Short lead-time Deliveries

Crane Capacity upto 10 T- Total 8

Operation in western India

24 x 7 Operations.





**Mould Assembly Shop**



**In House 5 Axis CNC Machine**



**CNC/EDM Shop**



**Mould Trail Shop**



**Mould Trail Shop**



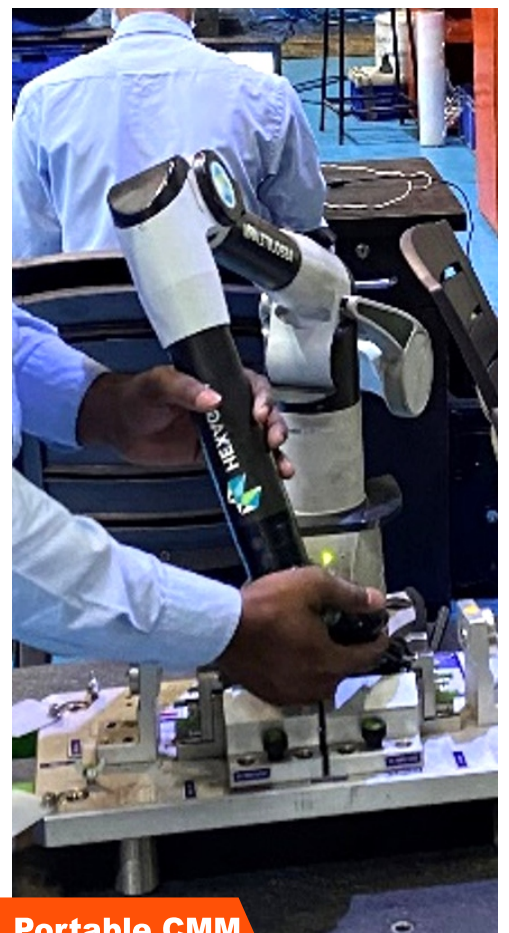
# PUNE MOULD SHOP



**Twin Head CNC EDM**



**Die Spotting Press**



**Portable CMM**



# FACILITY TOUR



Incoming Inspection



Raw Material Store



Injection Moulding Shop



Injection Moulding Shop

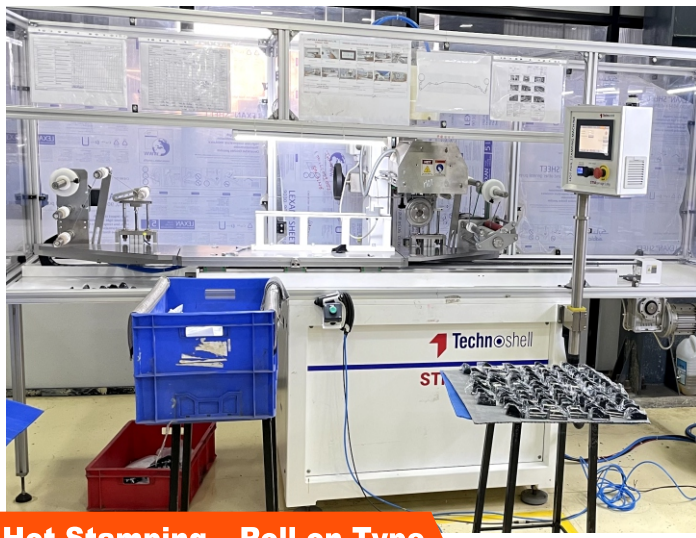


Injection Moulding Shop



# CHAKAN INJECTION MOULDING PLANT

## SPECIAL PROCESS



Hot Stamping – Roll on Type



Hot Stamping – Up Down Type



Pad Printing



Ultrasonic Welding



Quality and Rework.



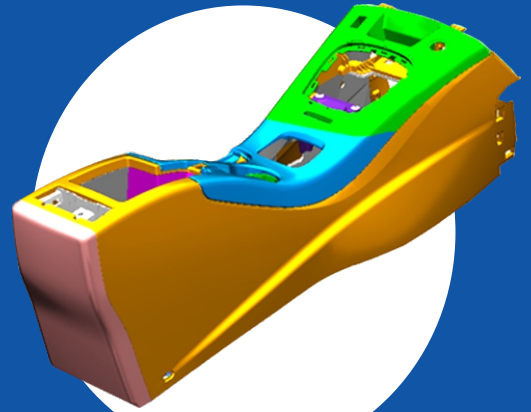
Dispatch



# OUR EXPERTISE



**INSTRUMENT PANEL**



**FLOOR CONSOLE**



**SEAT PLASTICS**



**PILLAR TRIMS**



**DOOR PANEL**



**HAND GRIPS**



**BOX BATTERY**



**CASE BATTERY**



**HEAD LAMP**



**FLOOR MAT**



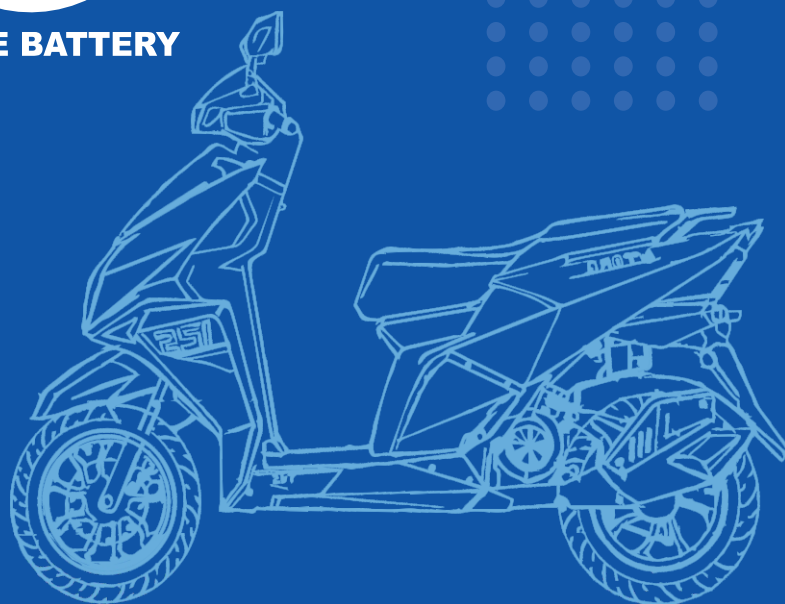
**GUARD B SARI**



**SPEEDOMETER  
COVER**



**TANK FLAP**





# Our Expertise in Product Design



# Our Expertise in Automotive interior Mould

## Mould for **ISUZU**

✓ RT64 & RT97 through **faurècia**

24 Moulds

Console & IP Parts

⌚ Delivery - 12 to 14 Week





# Automotive interior Moulds

**Mould for**  **MARUTI SUZUKI** *Ciaz*



**IAC G-130**

**Storage Bin Assembly through**



**7**

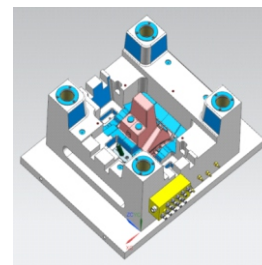
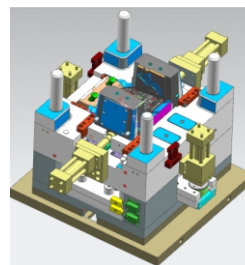
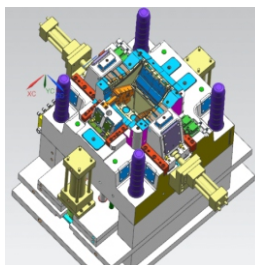
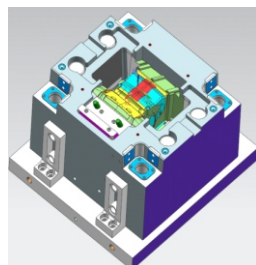
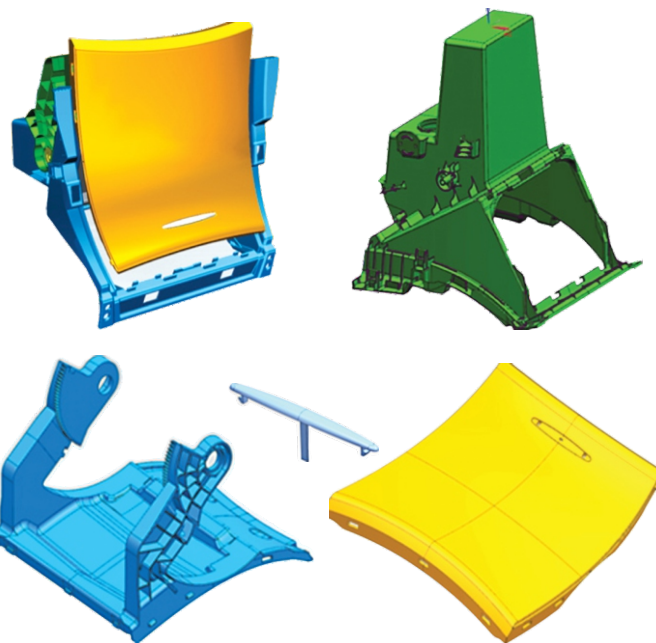
**Moulds**



**Storage Bin**



**Delivery - 9 to 10 Week**



**Mould for**  **TATA** **GENX**  
EASY SHIFT



**Tata X-302 through TATA AUTOCAMP SYSTEMS LTD**

**8**

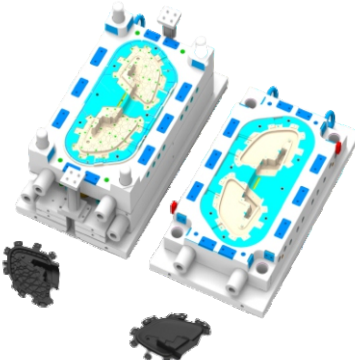
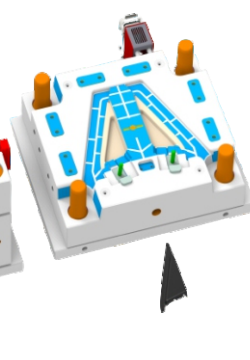
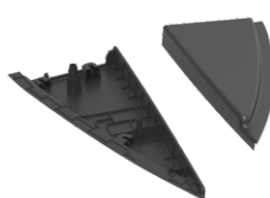
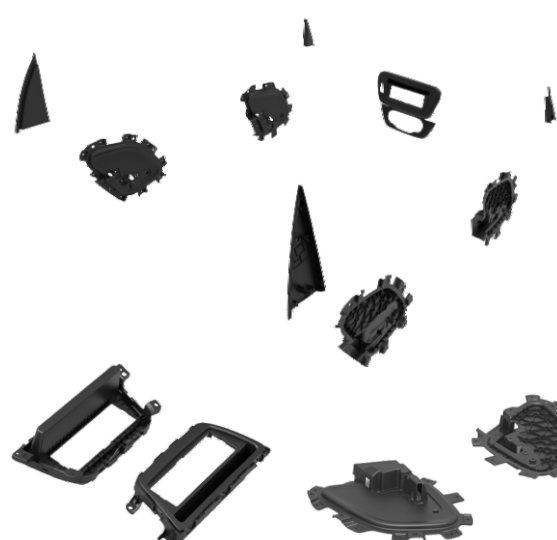
**Moulds**



**Door & IP Parts**



**Delivery - 10 to 11 Week**





## Mould for **EcoSPORT**



B515 through **faurecia**

**13**

Moulds



Console & IP Parts



Delivery - 11 to 12 Week



## Mould for **TATA NEXON**



Tata X-104  
through **TATA AUTOCAMP SYSTEMS LTD**

**7**

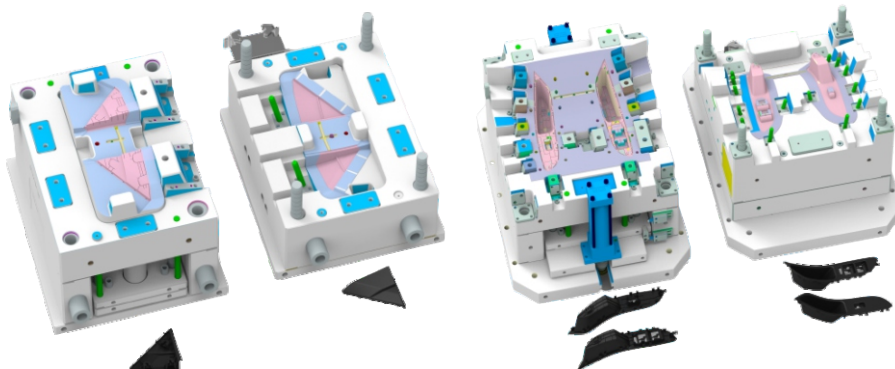
Moulds



Door Parts



Delivery - 10 to 11 Week



# Automotive interior Moulds

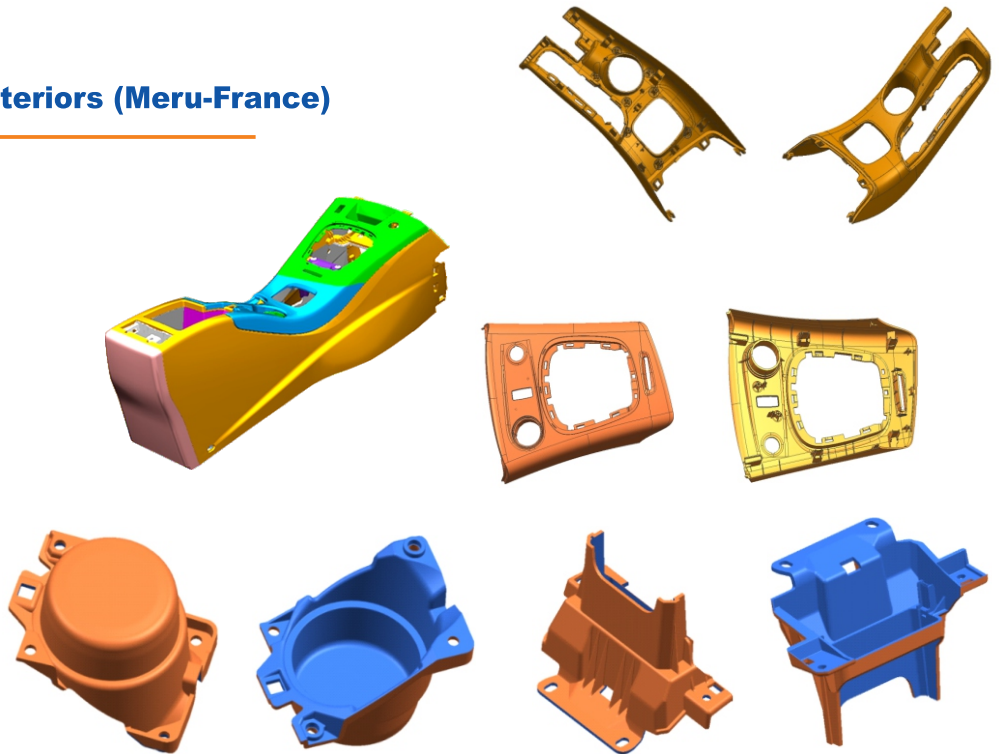
Mould for  **RENAULT** (Europe)  
Passion for life

✓ J95 through **faurecia Interiors (Meru-France)**

7 Moulds

 Box Floor Console Assembly

 Delivery - 12 Week



## Our Expertise in Lighting Moulds

Mould for **Two Wheelers**

✓ **TVS**  **NTORQ 125** through **LUMAX** 

4 Moulds

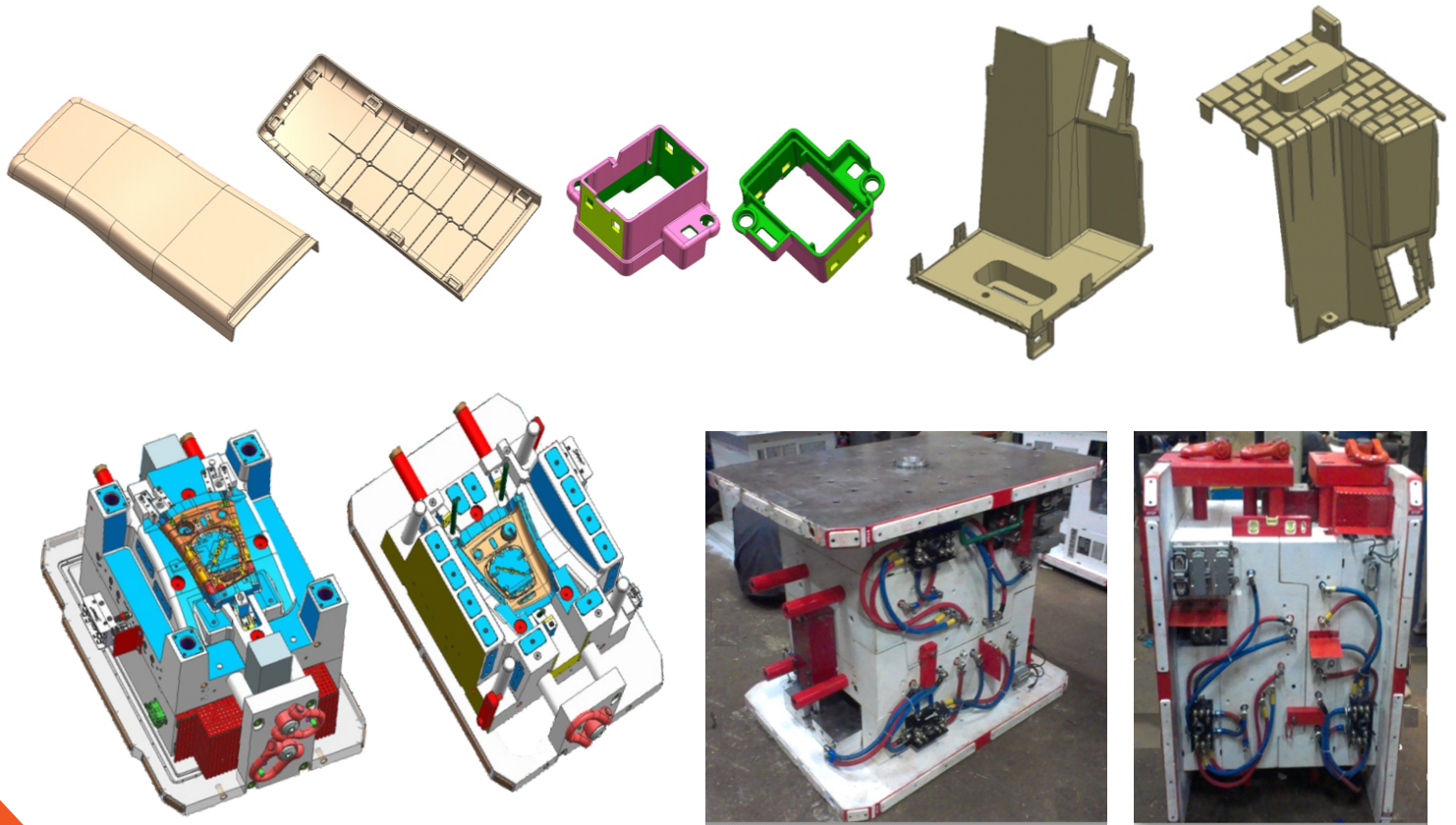
 Headlights

 Delivery - 10 Week





# OUR INTERNATIONAL PROJECT



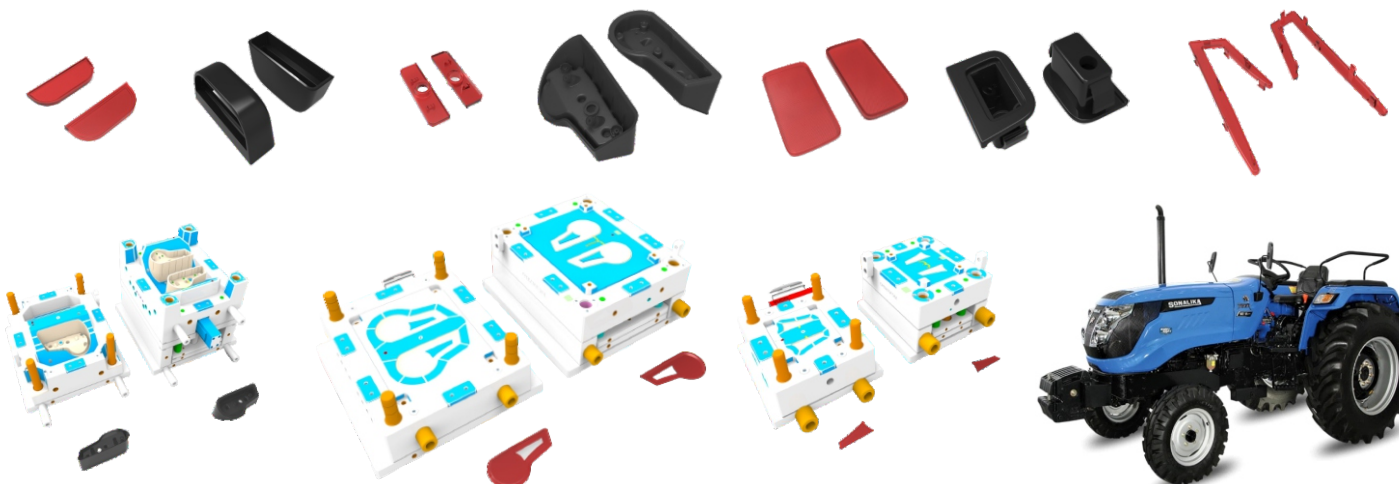
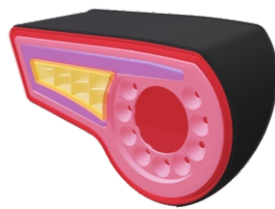
## Mould for SONALIKA TRACTOR

✓ TIGER DI-55 through **LUMAX** 

5 Moulds

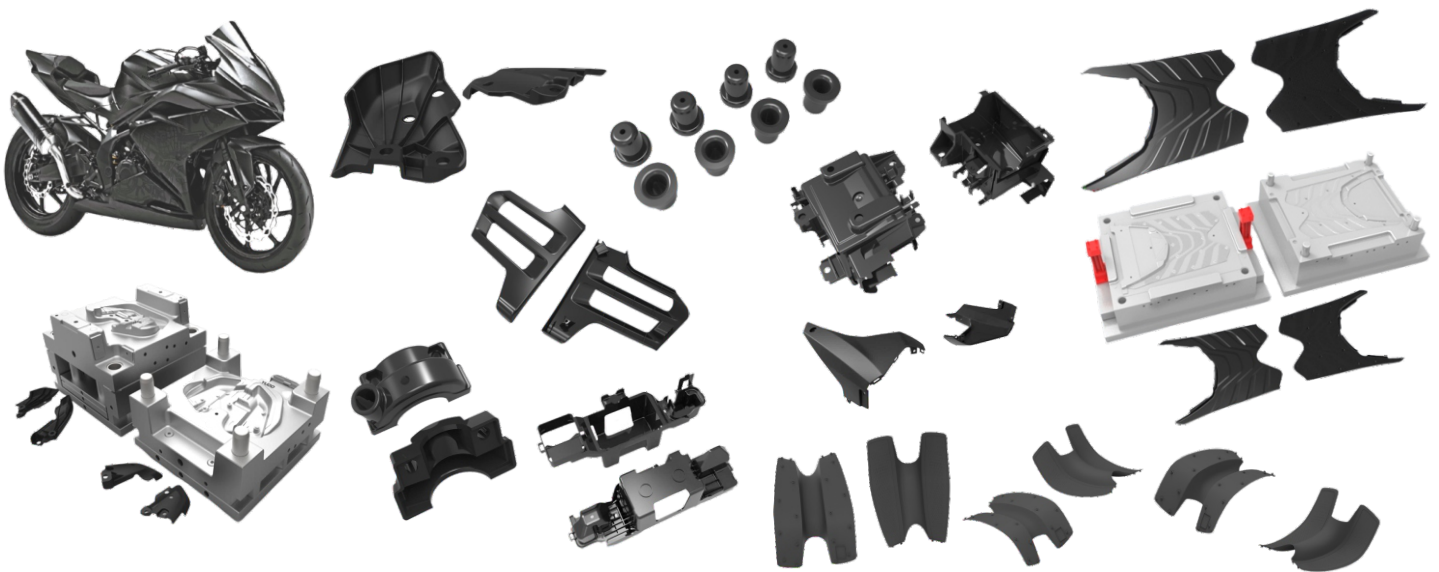
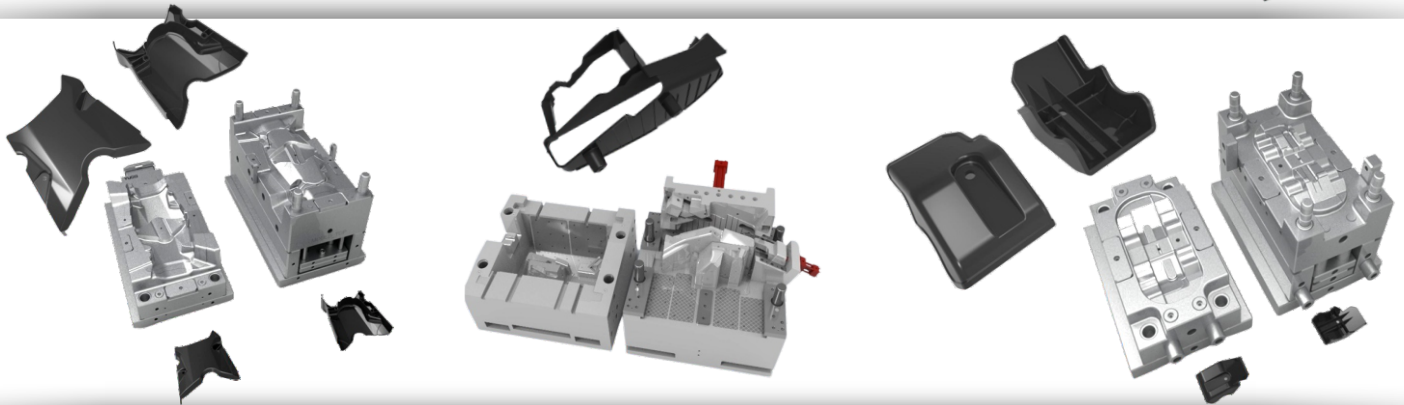
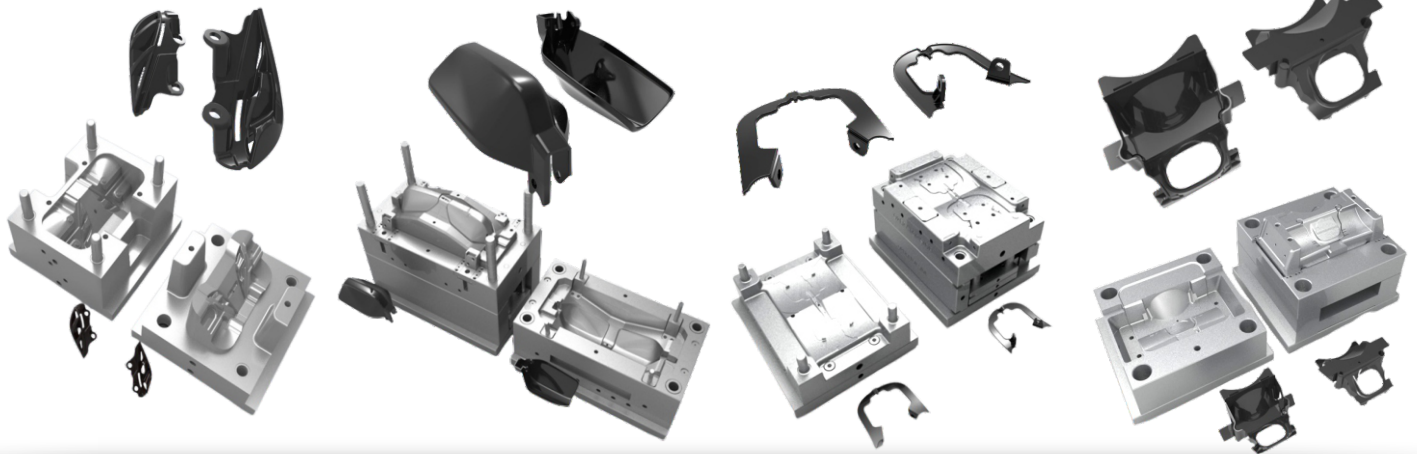
 Headlights

 Delivery - 10 Week





# Our Expertise in Automotive Two Wheeler



## Insert Over Moulded Part & 2K Mould



# Our Experience in Medical

## Medical • Electrical & White Goods



**SCHILLER  
MEDICAL OXIMETER**



**DESKTOP PULSE  
OXIMETER OXYWAVE**



**GRAVITY BASED  
WATER PURIFIER**



**MININED NEBULIZER**



**NEBULIZER PISTON  
COMPRESSOR MACHINE**

## Our Expertise in Automotive Moulds and Moulding



### Mould & Moulding for **HYUNDAI** VENUE



**QXi- Hyundai** through **faurecia**

**16**

**Moulds & Moulding**



**Air Vent Parts**



**Delivery - 12 Week**





# Our Expertise in Automotive Moulds and Moulding

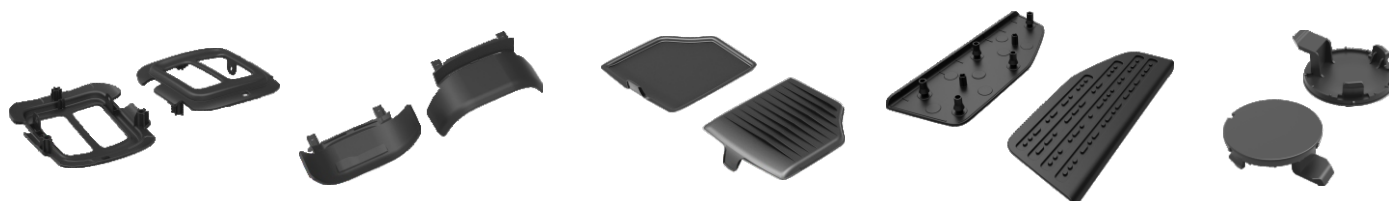
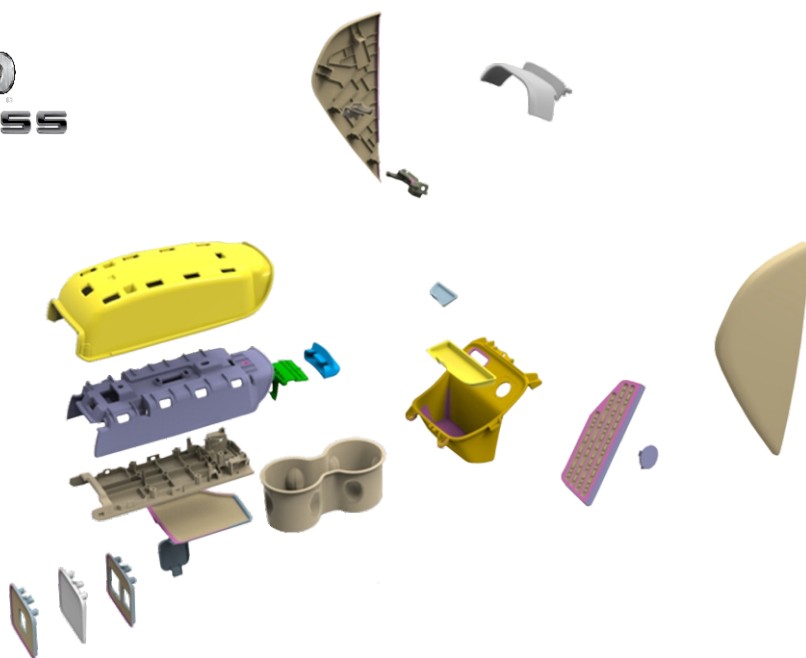
## Mould & Moulding for

✓ **FIAT 556 MCA** through **faurecia**

29 **Moulds & Moulding**

 **Console & IP Parts**

 **Delivery - 12 to 14 Week**



# Jeep Mould & Moulding for COMPASS



JEEP COMPASS through **faurecia**

49

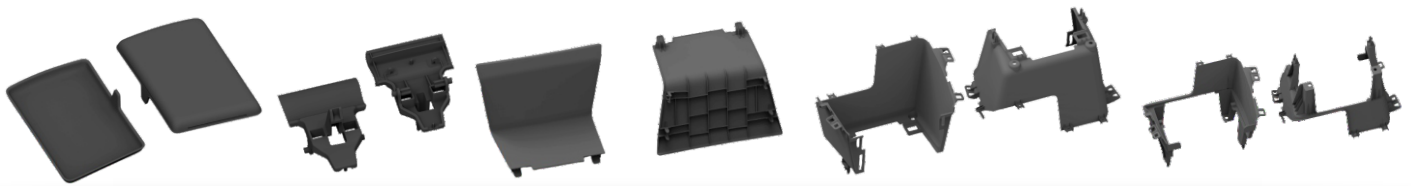
Moulds & Moulding



Console & IP Parts



Delivery - 12 to 14 Week





# Our Expertise in Automotive Moulds and Moulding

## Mould & Moulding for Volkswagen



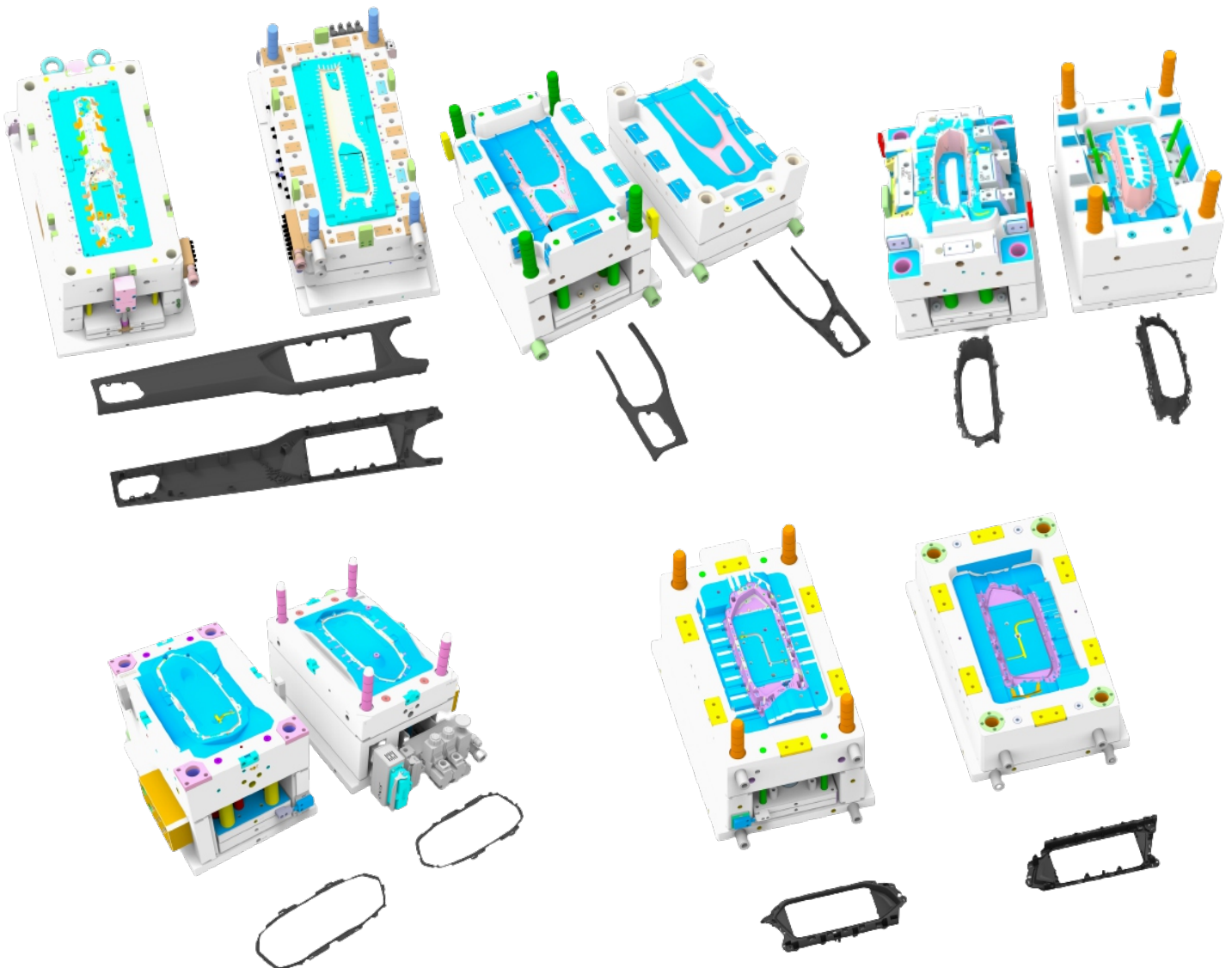
✓ **VW 216 RHD - LHD** through **faurecia**

**22** Moulds Project

**7** Parts Moulding

 **Deco & IP Parts**

 **Delivery - 12 to 14 Week**



## HOT STAMPING PARTS



## PAD PRINTING





## CAM TOOLS CAD/CAM FACILITY LIST

CAD / CAM SOFTWARE DETAILS	USER DETAILS
Unigraphics NX - CAD Design Software - 4 Licence.	4 - Mould Designer With 6 Years of Experience in Mould Design for Automotive Moulds.
Autodesk - PowerShape - CAD Design & Modelling Software with Tool Maker & Electrode Module - 11 Licence	8 - Mould Designer With 4-5 Years of Experience in Complex Mould for Automotive / Electrical / Medical Industries.
Autodesk - PowerMill - With 5 Axis Machining Module - 7 Licence	5 - CNC Programmers with hands on experience of CNC Machining / 2- Programmers for 5-Axis trained at UK.
Autodesk - PowerInspect- Inspection Software - 2 Licence	2 - Inspection Engineers / White Light Scanning Expertise - Steinbichler's COMET 5

## LIST OF MANUFACTURING SETUP

### MUMBAI TOOL ROOM

#### CNC MACHINING CELL

Description	Make	Travel Size	Qty	Location
CNC MACHINING CENTER	DECKEL DMU 60 T- 5 Axis	630 x 500 x 500	1	CAM TOOLS
	DECKEL DMC 1035V	1050 X 550 X 500	1	CAM TOOLS
	COSMOS CVM 1060	1050 X 610 X 600	1	CAM TOOLS
	COSMOS CVM 640	650 X 450 X 500	1	CAM TOOLS
Graphite Machining Centre	BFW BMV 45	600 x 450 x 500	1	CAM TOOLS

#### EDM MACHINING CELL

Description	Make	Tank Size	Qty	Location
CNC EDM	JOEMARS JMNC 62	1500 x 1100 x 500	1	CAM TOOLS
CNC EDM	HCM 5040	1200 X 700 X 400	1	CAM TOOLS
ZNC EDM	JOEMARS JM 430	1050 X 600 X 400	2	CAM TOOLS
CNC EDM	CHMER	1600 X 1000 X 500	1	VENDOR
FANUC ALPHA ROBOFILL	FANUC	550 X 450 X 300	1	VENDOR

#### INSPECTION CELL

Description	Make	Travel Size	Qty	Location
CMM PORTABLE	ROMER - HEXAGON	1000 X 1000 X 600	1	CAM TOOLS
SHADOW GRAPH	NIKKON	DIA 250 WITH 20X & 50X	1	CAM TOOLS
White Light Scanner	Steinbichler's COMOT 5	Resolution 1360 X 1024	1	VENDOR

#### MATERIAL HANDELING

Description	Make	Capacity	Qty	Location
GANTRY CRANE	INDEF	7.5 TONNS	2	CAM TOOLS
GANTRY CRANE	INDEF	5 TONNS	1	CAM TOOLS
GANTRY CRANE	INDEF	2 TONNS	2	CAM TOOLS

### PUNE TOOL ROOM

#### CNC MACHINING CELL

Description	Make	Travel Size	Qty	Location
CNC MACHINING CENTER	BFW BMV 60	1050 X 610 X 610	1	CTIPL-PUNE
	COSMOS CVM 1060	1050 X 610 X 600	1	CTIPL-PUNE
	COSMOS CVM 800	800 X 500 X 500	1	CTIPL-PUNE
	COSMOS CVM 640	650 X 450 X 500	1	CTIPL-PUNE
	CMO - 1675	1600 X 800 X 700	1	CTIPL-PUNE
	YCM DCV3016B	3060 X 1600 X 762	1	VENDOR

#### EDM MACHINING CELL

Description	Make	Tank Size	Qty	Location
TWIN HEAD CNC EDM	HCM 2HC1685	2600 x 1700 x 800	1	CTIPL-PUNE
CNC EDM	HCM 4030	1050 X 600 X 400	1	CTIPL-PUNE
ZNC EDM	JOEMARS JM 430	1050 X 600 X 400	1	CTIPL-PUNE

#### CONVENTIONAL MACHINING CELL

Description	Make	Travel Size	Qty	Location
SURFACE GRINDING	ALEX	800 X 400 X 350	1	CTIPL-PUNE
SURFACE GRINDING	JONES SHIPMAN	500 X 200 X 200	1	CTIPL-PUNE
RADIAL DRILL	RICHMOND	1000 X 500 X 500	1	CTIPL-PUNE

#### MATERIAL HANDELING

Description	Make	Capacity	Qty	Location
GANTRY CRANE	LOTKAR	7.5 TONNS	2	CTIPL-PUNE

#### SPOTTING MACHINE

Description	Make	Size	Qty	Location
DIE SPOTTING MACHINE	SXKH 120 TONNS	1400 X 1100 X 1000	1	CTIPL-PUNE

## LIST OF MANUFACTURING SETUP

### CHAKAN PLANT - INJECTION MOULDING MACHINE DETAILS

Model	Manufacturer	Injection Capacity Gpps (gm)	Injection Pressure max. (bar)	Screw Diameter (mm)	Clamp Force (tons)	Min. Mould Hieght (mm)	Max. Mould Hieght (mm)	Distance between Tie Rod (mm)
Fanuc 65	Fanuc - All Electric	50	2100	26	65	210	410	360 X 320
Nova Servo 80T	Ferromatik Milacron	76	2500	24	80	150	350	325 X 310
Nova Servo 110T	Ferromatik Milacron	126	2500	28	110	150	400	405 X 360
SM 150T EV 2	SUPERMASTER	150	1887	36	150	145	470	410 X 360
ROMEX -150T	Romex Union Taiwan	250	1632	40	150	110	485	410 X 410
Fanuc 165	Fanuc - All Electric	147	1900	36	165	200	570	520 X 530
Q - SERIES FM - 180T	Ferromatik Milacron	239	2492	40	180	200	600	550 X 510
Hydron servo FM -200T	Ferromatik Milacron	363	2249	45	200	200	525	510 X 510
Engel 225	Engel	361	1700	50	225	200	510	570 X 570
Q - SERIES FM - 280T	Ferromatik Milacron	523	2236	50	280	200	710	660 X 560
Hydron Servo FM - 300T	Ferromatik Milacron	523	2236	50	300	250	680	620 X 620
JSW 400T	JSW	810	1820	66	400	320	770	730 X 730
Kawaguchi - 600T	Kawaguchi	2421	1600	90	600	410	870	870 X 870
Omega Servo FM -660T	Ferromatik Milacron	1250	1540	70	660	460	980	920 X 920
Omega Servo FM -775T	Ferromatik Milacron	1530	1540	80	775	500	1050	950 X 950

## Our Patrons

